

Visual Studio Code

Version:	1.0.0
Created by:	cloudimg

Table of Contents

1.) Overview.....	1
2.) Access & Security.....	1
3.) System Requirements.....	2
4.) Connecting to the Instance.....	2
5.) Filesystem Configuration.....	6
6.) Server Components.....	7
7.) Using System Components.....	7

1.) Overview

This document is provided as a user guide for the Visual Studio Code product offering on the AWS Marketplace. Please reach out to support@cloudimg.co.uk if any issues are encountered following this user guide for the chosen product offering.

2.) Access & Security

Please update the security group of the target instance to allow the below ports and protocols for access and connectivity.

Protocol	Type	Port	Description
----------	------	------	-------------



Registered
Technology
Partner

cloudimg
(+44) 02045382725
3rd Floor 86-90 Paul Street London EC2A 4NE
support@cloudimg.co.uk
<https://cloudimg.co.uk>

RDP	TCP	3389	Remote Desktop Access
-----	-----	------	-----------------------

3.) System Requirements

The minimum system requirements for the chosen product offering can be found below

Minimum CPU	Minimum RAM	Required Disk Space
1	1 GB	30GB

4.) Connecting to the Instance

Once launched in the Amazon EC2 Service, please connect to the instance via an RDP client using the **Administrator** user. Please allow the EC2 Instance to pass 2/2 status checks before connecting via RDP to allow the system enough time to complete the boot process.

To obtain the randomly generate password on boot for the Administrator user, please follow the below steps in the AWS Console.

Log into the Target AWS Account > Select the region of which was chosen to host the newly launched cloudimg AMI

The screenshot shows the AWS Management Console Home page. The top navigation bar includes the AWS logo, a search bar, and the current region (N. Virginia) and account (cloudimg). The main content area is divided into several sections:

- Recently visited:** A list of services recently accessed, including EC2, S3, AWS Cost Explorer, AWS Marketplace Subscriptions, Systems Manager, Elastic Kubernetes Service, AWS Budgets, VPC, CloudShell, AWS Application Migration Service, Service Catalog, CloudTrail, IAM, and EC2 Image Builder.
- Welcome to AWS:** A section with links for getting started, training and certification, and discovering new services.
- AWS Health:** A section showing 0 open issues and 0 scheduled changes.
- Cost and usage:** A section showing current month costs of \$55.04, forecasted month end costs of \$103.38, and top costs for the current month (EC2 - Other: \$40.90, Tax: \$9.17, Amazon Simple Storage Service: \$3.20).

Select EC2



Registered
Technology
Partner

cloudimg
(+44) 02045382725
3rd Floor 86-90 Paul Street London EC2A 4NE
support@cloudimg.co.uk
https://cloudimg.co.uk

Resources

You are using the following Amazon EC2 resources in the US East (N. Virginia) Region:

Instances (running)	1	Dedicated Hosts	0	Elastic IPs	0
Instances	1	Key pairs	12	Load balancers	0
Placement groups	0	Security groups	2	Snapshots	863
Volumes	1				

Launch instance

To get started, launch an Amazon EC2 instance, which is a virtual server in the cloud.

[Launch instance](#) [Migrate a server](#)

Note: Your instances will launch in the US East (N. Virginia) Region.

Service health

Region: US East (N. Virginia)

Status: ✔ This service is operating normally

Zones

Zone name	Zone ID
us-east-1a	use1-az6

Account attributes

Supported platforms [VPC](#)

Default VPC [vpc-07e0f3e58d8ba1a40](#)

Settings: [EBS encryption](#) [Zones](#) [EC2 Serial Console](#) [Default credit specification](#) [Console experiments](#)

Explore AWS

Get Up to 40% Better Price Performance

T4g instances deliver the best price performance for burstable general purpose workloads in Amazon EC2. [Learn more](#)

Save up to 90% on EC2 with Spot Instances

Optimize price-performance by combining EC2 purchase options in a single EC2 ASG. [Learn more](#)

Select Instances (running)

Instances (1/1) Info

Find instance by attribute or tag (case-sensitive)

Instance state = running [Clear filters](#)

☒ Name ☐ Instance ID ☐ Instance state

☒ cloudimg-windows-server [i-0ea3766b9c1bc59ec](#) ✔ Running

Actions

- Connect
- View details
- Manage instance state
- Instance settings
- Networking
- Security
- Image and templates
- Monitor and troubleshoot

Instance: i-0ea3766b9c1bc59ec (cloudimg-windows-server)

Details | Security | Networking | Storage | Status checks | Monitoring | Tags

Instance summary Info

Instance ID i-0ea3766b9c1bc59ec (cloudimg-windows-server)	Public IPv4 address 54.89.238.46 open address	Private IPv4 addresses 172.31.88.88
IPv6 address -	Instance state ✔ Running	Public IPv4 DNS ec2-54-89-238-46.compute-1.amazonaws.com open address
Hostname type IP name: ip-172-31-88-88.ec2.internal	Private IP DNS name (IPv4 only) ip-172-31-88-88.ec2.internal	Elastic IP addresses -
Answer private resource DNS name -	Instance type t3.medium	AWS Compute Optimizer finding ① Opt-in to AWS Compute Optimizer for recommendations. Learn more
Auto-assigned IP address 54.89.238.46 [Public IP]	VPC ID vpc-07e0f3e58d8ba1a40	

Search for the newly launched EC2 Instance

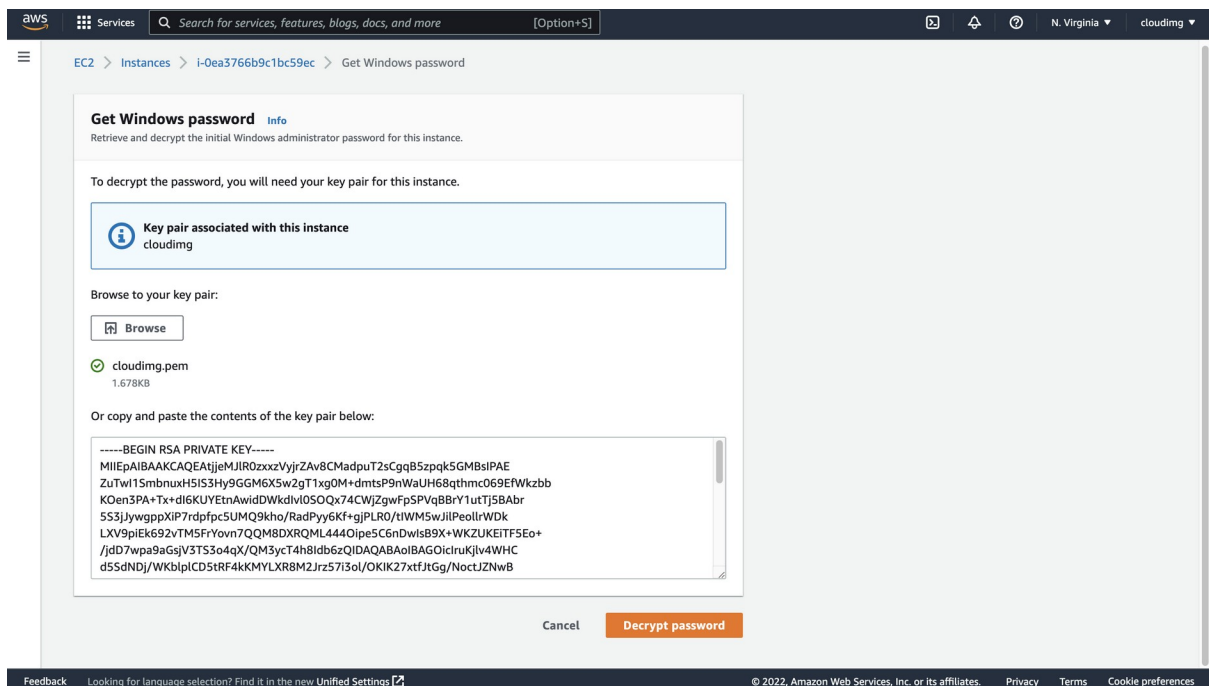
Select the Radio button above for the instance

Click Actions > Security > Get Windows password

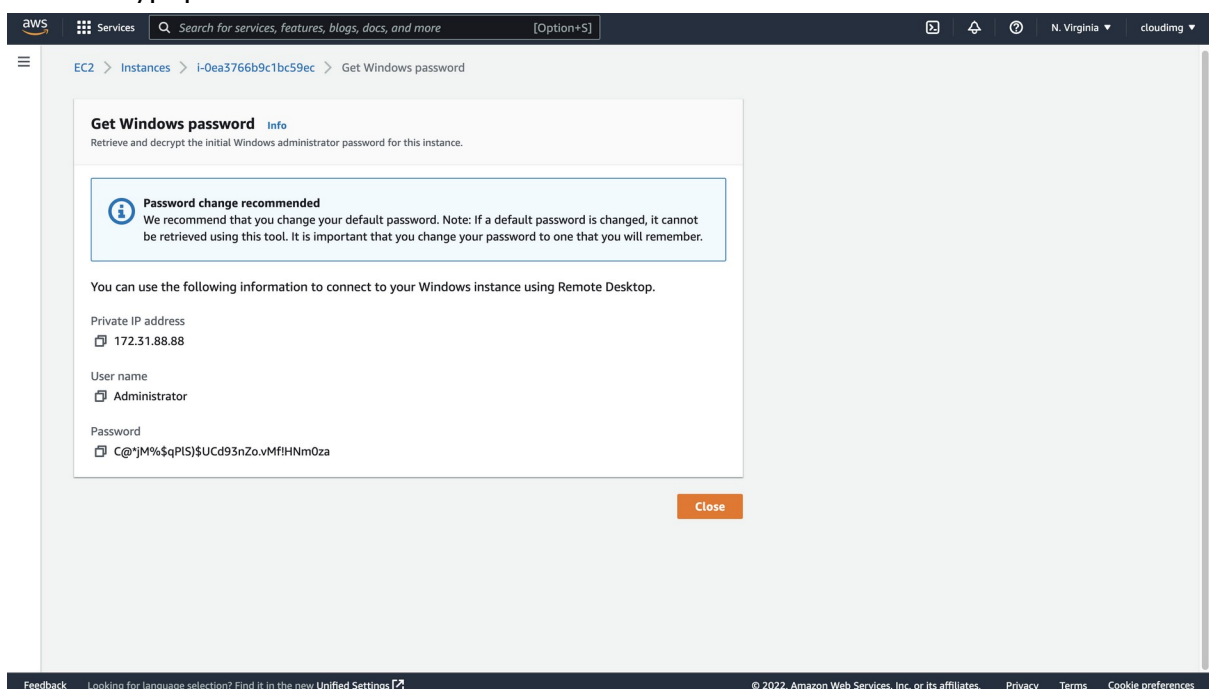


Registered
Technology
Partner

cloudimg
(+44) 02045382725
3rd Floor 86-90 Paul Street London EC2A 4NE
support@cloudimg.co.uk
<https://cloudimg.co.uk>



Click Browse and upload the key pair selected during the launch of the EC2 instance from the AWS Marketplace.
Click Decrypt password

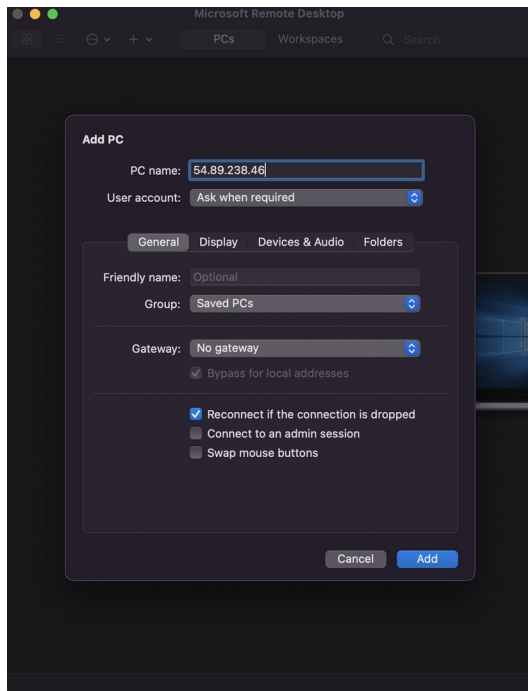


The Administrator password will now appear in plain text like the above example. Take a copy of this value and open a Remote Desktop Client Application.



Registered
Technology
Partner

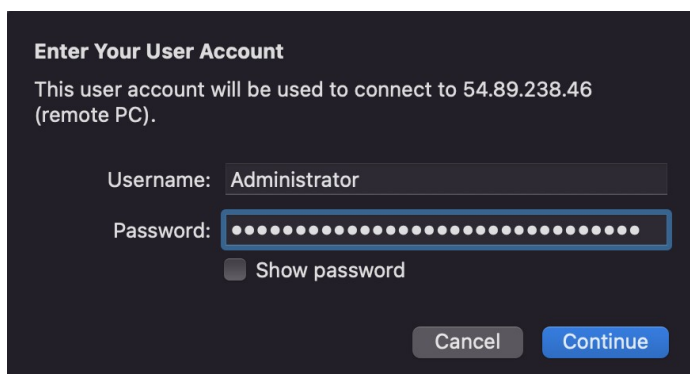
cloudimg
(+44) 02045382725
3rd Floor 86-90 Paul Street London EC2A 4NE
support@cloudimg.co.uk
https://cloudimg.co.uk



Create a new connection and enter the IP address of the newly launched EC2 Instance. For this example, the public IP address will be used as the server has been launched in a public subnet. Use the private IP address where applicable for your environment if you have a private connection into the AWS VPC of which hosts the EC2 Instance. These Private connections often take the form of a VPN connection.

Click Add

Once added, double click the connection profile created in the above step, you will be prompted for a username & password. Enter the below values.



Username: Administrator

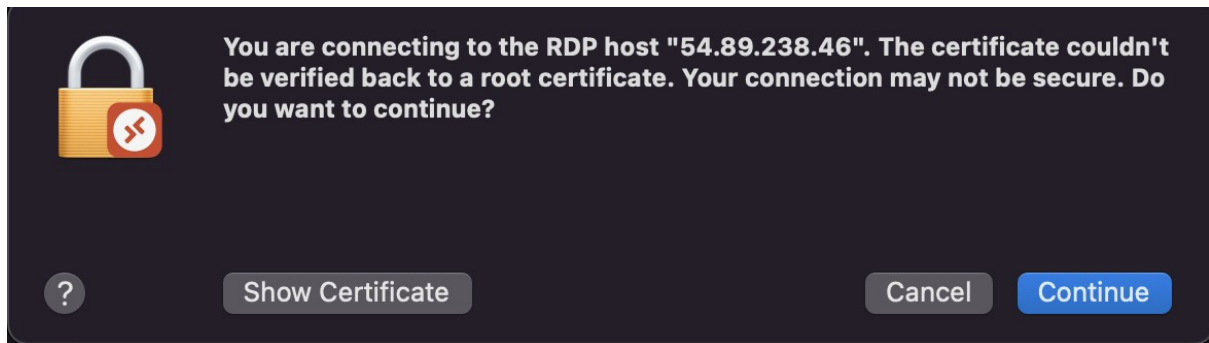
Password: DECRYPTED VALUE RETRIEVED FROM THE ABOVE STEPS

Click Continue

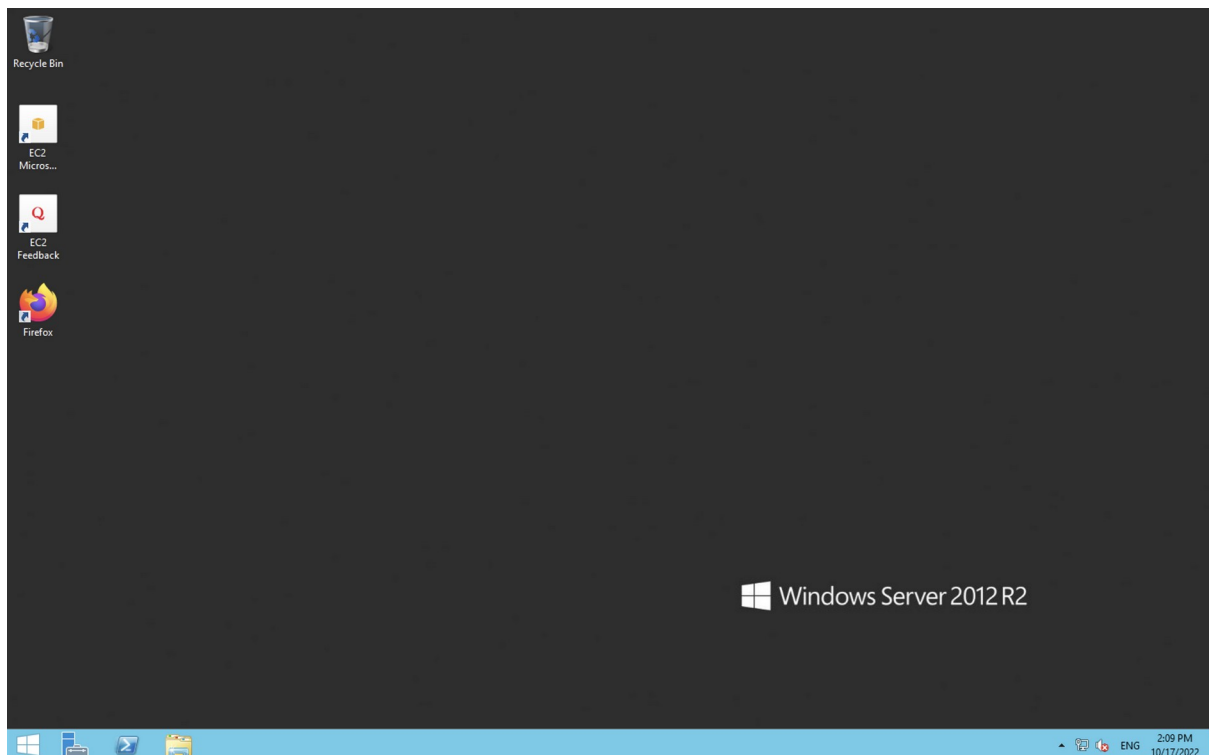


Registered
Technology
Partner

cloudimg
(+44) 02045382725
3rd Floor 86-90 Paul Street London EC2A 4NE
support@cloudimg.co.uk
<https://cloudimg.co.uk>



Click Continue if a pop up like the above appears.



You have now successfully connected to the Windows Server hosted in AWS.

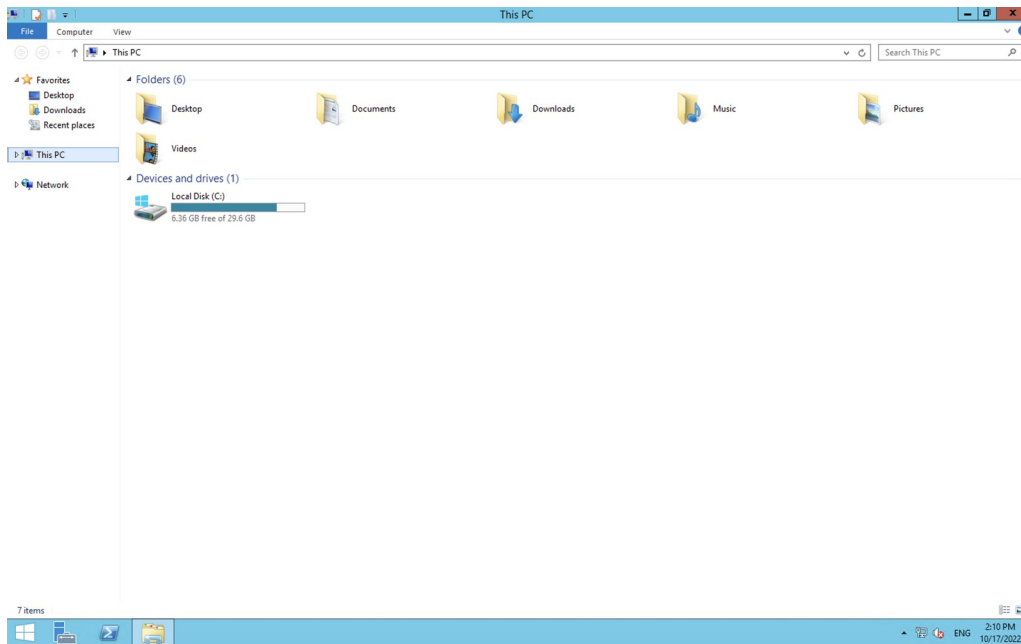
5.) Filesystem Configuration

Please see below for a screenshot of the server disk configuration and specific mount point mappings for software locations.



Registered
Technology
Partner

cloudimg
(+44) 02045382725
3rd Floor 86-90 Paul Street London EC2A 4NE
support@cloudimg.co.uk
<https://cloudimg.co.uk>



6.) Server Components

Please see below for a list of installed server components.

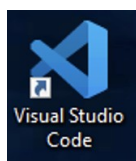
Component
Visual Studio Code

7.) Using System Components

Instructions can be found below for using each component of the server build mentioned in section 7 of this user guide document.

Visual Studio Code

Preinstalled and available for use via the Desktop icon.



Registered
Technology
Partner

cloudimg
(+44) 02045382725
3rd Floor 86-90 Paul Street London EC2A 4NE
support@cloudimg.co.uk
<https://cloudimg.co.uk>