

MySQL

Version:	1.0.0
Created by:	cloudimg

Table of Contents

1.) Overview.....	1
2.) Access & Security.....	1
3.) System Requirements.....	2
4.) Connecting to the Instance.....	2
5.) Filesystem Configuration.....	7
6.) Server Components.....	8
7.) Using System Components.....	8
MySQL Workbench.....	9

1.) Overview

This document is provided as a user guide for the MySQL product offering on the AWS Marketplace. Please reach out to support@cloudimg.co.uk if any issues are encountered following this user guide for the chosen product offering.

2.) Access & Security

Please update the security group of the target instance to allow the below ports and protocols for access and connectivity.



Registered
Technology
Partner

cloudimg
(+44) 02045382725
3rd Floor 86-90 Paul Street London EC2A 4NE
support@cloudimg.co.uk
<https://cloudimg.co.uk>

Protocol	Type	Port	Description
RDP	TCP	3389	Remote Desktop Access
TPC	TCP	3306	MySQL Database Listener Port

3.) System Requirements

The minimum system requirements for the chosen product offering can be found below

Minimum CPU	Minimum RAM	Required Disk Space
1	1 GB	30GB

4.) Connecting to the Instance

Once launched in the Amazon EC2 Service, please connect to the instance via an RDP client using the **Administrator** user. Please allow the EC2 Instance to pass 2/2 status checks before connecting via RDP to allow the system enough time to complete the boot process.

To obtain the randomly generate password on boot for the Administrator user, please follow the below steps in the AWS Console.

Log into the Target AWS Account > Select the region of which was chosen to host the newly launched cloudimg AMI



Registered
Technology
Partner

cloudimg
(+44) 02045382725
3rd Floor 86-90 Paul Street London EC2A 4NE
support@cloudimg.co.uk
<https://cloudimg.co.uk>

Console Home Info

Reset to default layout + Add widgets

Recently visited Info

- EC2
- S3
- AWS Cost Explorer
- AWS Marketplace Subscriptions
- Systems Manager
- Elastic Kubernetes Service
- AWS Budgets
- VPC
- CloudShell
- AWS Application Migration Service
- Service Catalog
- CloudTrail
- IAM
- EC2 Image Builder

[View all services](#)

Welcome to AWS

- [Getting started with AWS](#)
Learn the fundamentals and find valuable information to get the most out of AWS.
- [Training and certification](#)
Learn from AWS experts and advance your skills and knowledge.
- [What's new with AWS?](#)
Discover new AWS services, features, and Regions.

AWS Health Info

Open issues: 0 (Past 7 days)

Scheduled changes: 0 (Upcoming and past 7 days)

Cost and usage Info

Current month costs: **\$55.04**

Forecasted month end costs: **\$103.38** (Up 5% over last month)

Top costs for current month

- EC2 - Other: \$40.90
- Tax: \$9.17
- Amazon Simple Storage Service: \$3.20

Feedback Looking for language selection? Find it in the new Unified Settings. © 2022, Amazon Web Services, Inc. or its affiliates. Privacy Terms Cookie preferences

Select EC2

Resources EC2 Global view

You are using the following Amazon EC2 resources in the US East (N. Virginia) Region:

Instances (running)	1	Dedicated Hosts	0	Elastic IPs	0
Instances	1	Key pairs	12	Load balancers	0
Placement groups	0	Security groups	2	Snapshots	863
Volumes	1				

Launch instance

To get started, launch an Amazon EC2 instance, which is a virtual server in the cloud.

[Launch instance](#) [Migrate a server](#)

Note: Your instances will launch in the US East (N. Virginia) Region

Scheduled events

US East (N. Virginia)

Service health

Region: US East (N. Virginia)

Status: ✔ This service is operating normally

[AWS Health Dashboard](#)

Zones

Zone name	Zone ID
us-east-1a	use1-az6

Account attributes

Supported platforms

- VPC

Default VPC: vpc-07e0f3e8d8ba1a40

Settings

- EBS encryption
- Zones
- EC2 Serial Console
- Default credit specification
- Console experiments

Explore AWS

Get Up to 40% Better Price Performance

T4g instances deliver the best price performance for burstable general purpose workloads in Amazon EC2. [Learn more](#)

Save up to 90% on EC2 with Spot Instances

Optimize price-performance by combining EC2 purchase options in a single EC2 ASG. [Learn more](#)

<https://console.aws.amazon.com/console/home?region=us-east-1> Unified Settings. © 2022, Amazon Web Services, Inc. or its affiliates. Privacy Terms Cookie preferences

Select Instances (running)



Registered
Technology
Partner

cloudimg
(+44) 02045382725
3rd Floor 86-90 Paul Street London EC2A 4NE
support@cloudimg.co.uk
<https://cloudimg.co.uk>

The screenshot shows the AWS Management Console interface. On the left, there's a navigation menu with options like 'EC2 Dashboard', 'Events', 'Tags', 'Limits', 'Instances', 'Images', and 'Elastic Block Store'. The main area displays the 'Instances (1/1) Info' page. A table lists the instance 'cloudimg-windows-server' with ID 'i-0ea3766b9c1bc59ec' and state 'Running'. The 'Actions' dropdown menu is open, showing various options. The 'Security' option is highlighted, leading to the 'Get Windows password' page.

Search for the newly launched EC2 Instance
 Select the Radio button above for the instance
 Click Actions > Security > Get Windows password

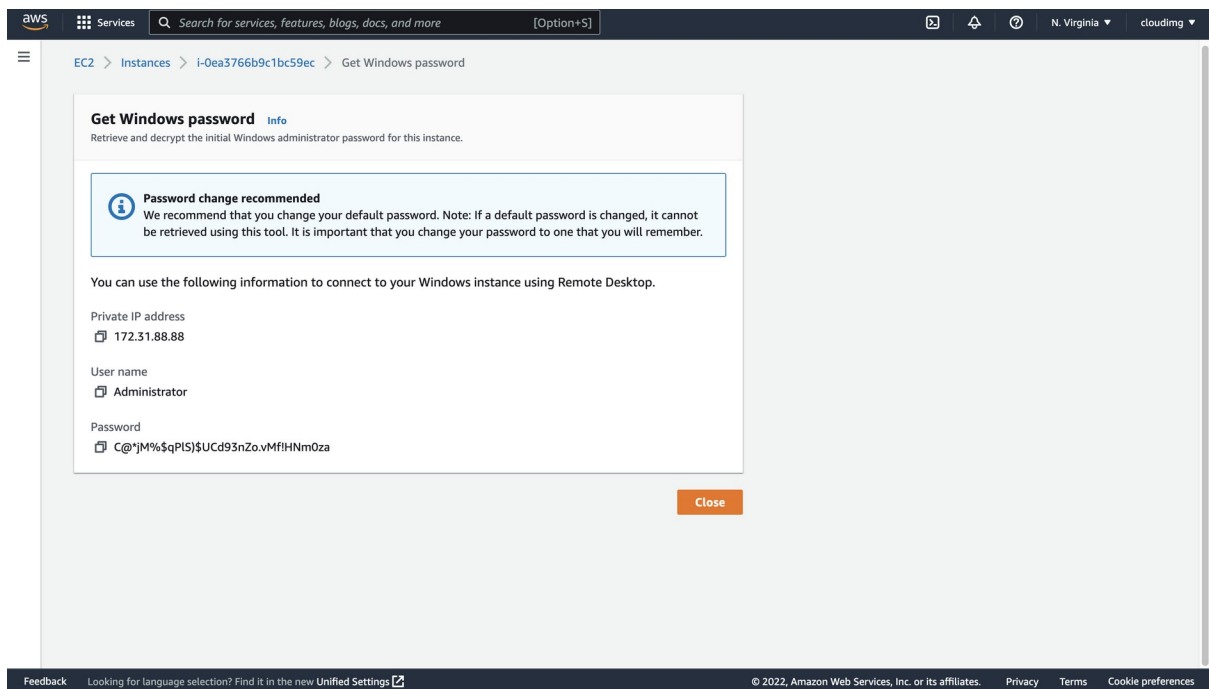
The screenshot shows the 'Get Windows password' page. It provides instructions on how to retrieve the initial Windows administrator password. A key pair named 'cloudimg' is associated with the instance. A 'Browse' button is used to select the 'cloudimg.pem' key pair file. The page also displays the RSA private key content for the key pair.

Click Browse and upload the key pair selected during the launch of the EC2 instance from the AWS Marketplace.
 Click Decrypt password

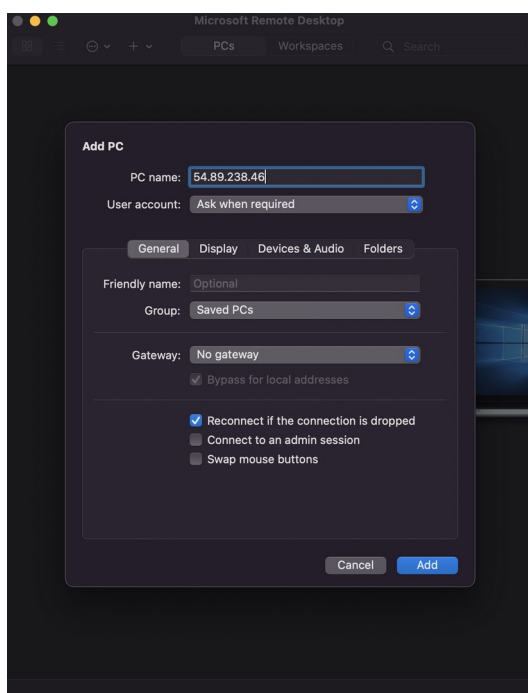


Registered
 Technology
 Partner

cloudimg
 (+44) 02045382725
 3rd Floor 86-90 Paul Street London EC2A 4NE
 support@cloudimg.co.uk
 https://cloudimg.co.uk



The Administrator password will now appear in plain text like the above example. Take a copy of this value and open a Remote Desktop Client Application.



Create a new connection and enter the IP address of the newly launched EC2 Instance. For this example, the public IP address will be used as the server has been launched in a public subnet. Use the private IP address where applicable for your environment if you have a private connection into the AWS VPC of which hosts the EC2 Instance. These Private connections often take the form of a VPN connection.

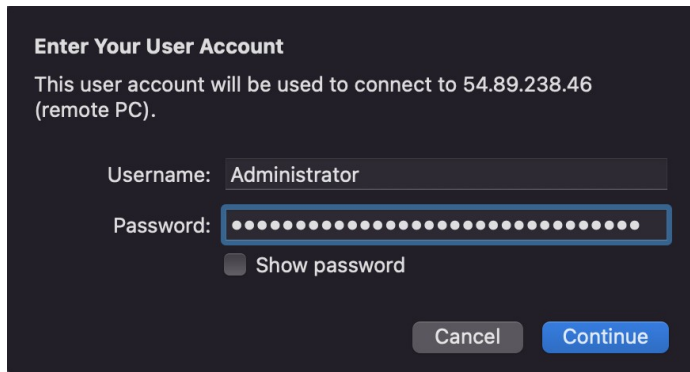


Registered
Technology
Partner

cloudimg
(+44) 02045382725
3rd Floor 86-90 Paul Street London EC2A 4NE
support@cloudimg.co.uk
<https://cloudimg.co.uk>

Click Add

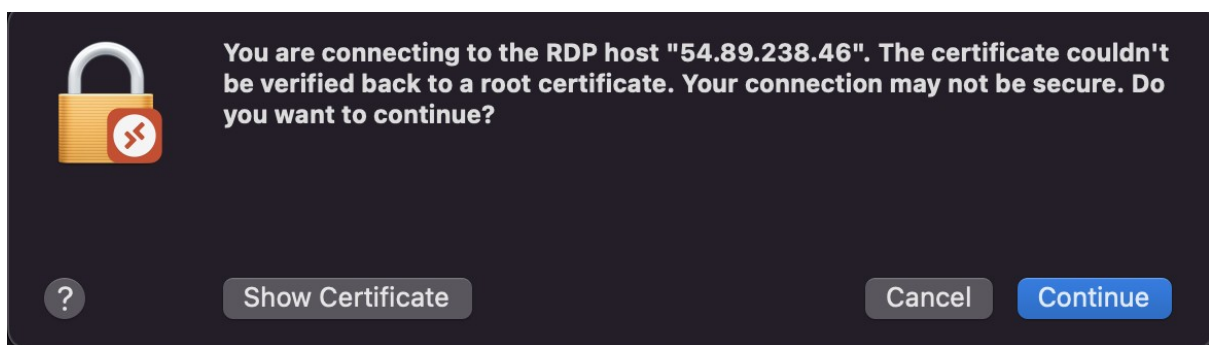
Once added, double click the connection profile created in the above step, you will be prompted for a username & password. Enter the below values.



Username: Administrator

Password: DECRYPTED VALUE RETRIEVED FROM THE ABOVE STEPS

Click Continue

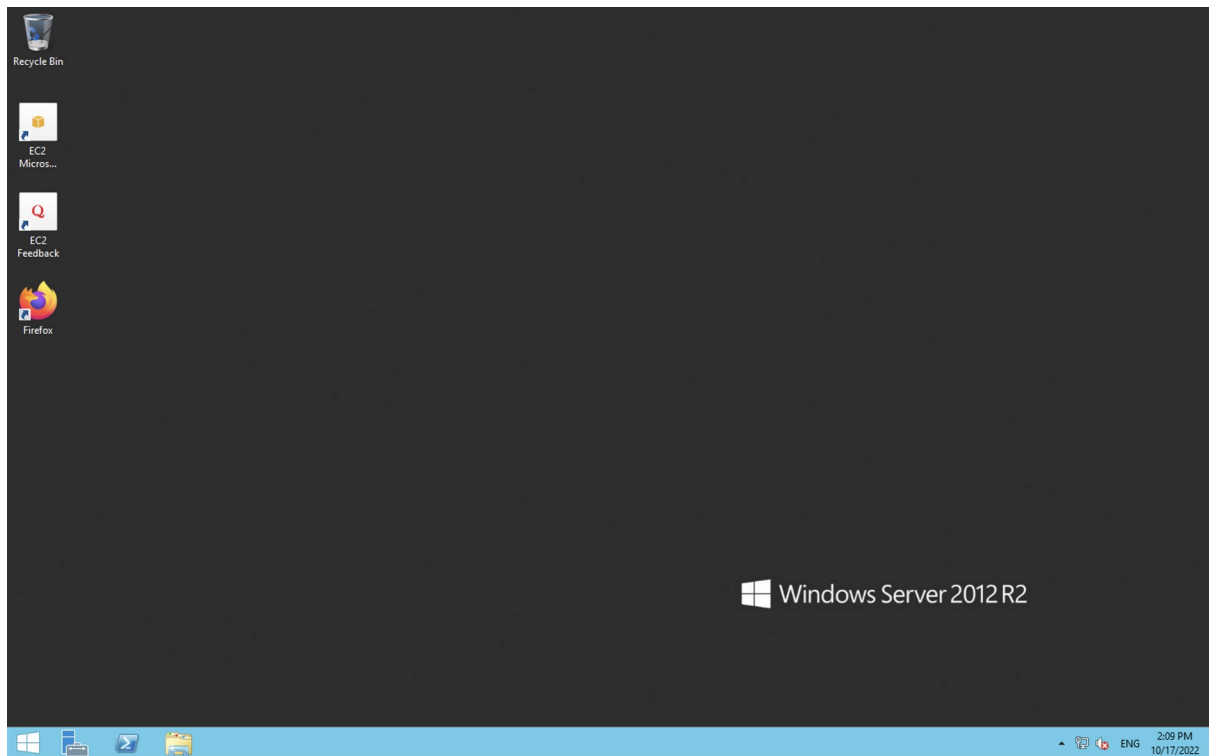


Click Continue if a pop up like the above appears.



Registered
Technology
Partner

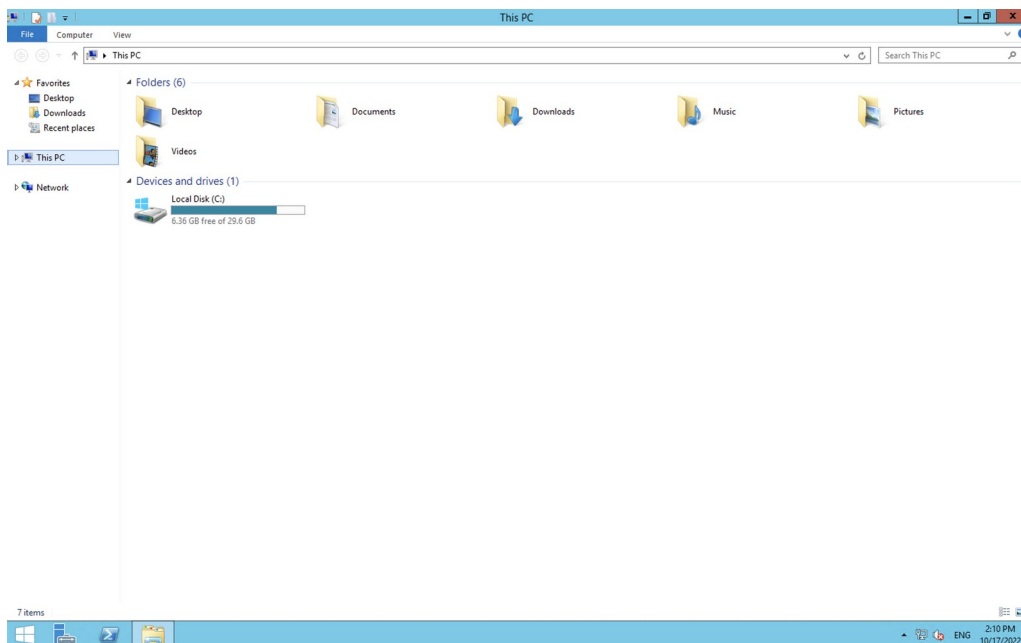
cloudimg
(+44) 02045382725
3rd Floor 86-90 Paul Street London EC2A 4NE
support@cloudimg.co.uk
<https://cloudimg.co.uk>



You have now successfully connected to the Windows Server hosted in AWS.

5.) Filesystem Configuration

Please see below for a screenshot of the server disk configuration and specific mount point mappings for software locations.



Registered
Technology
Partner

cloudimg
(+44) 02045382725
3rd Floor 86-90 Paul Street London EC2A 4NE
support@cloudimg.co.uk
<https://cloudimg.co.uk>

6.) Server Components

Please see below for a list of installed server components.

Component	Version
MySQL	Latest

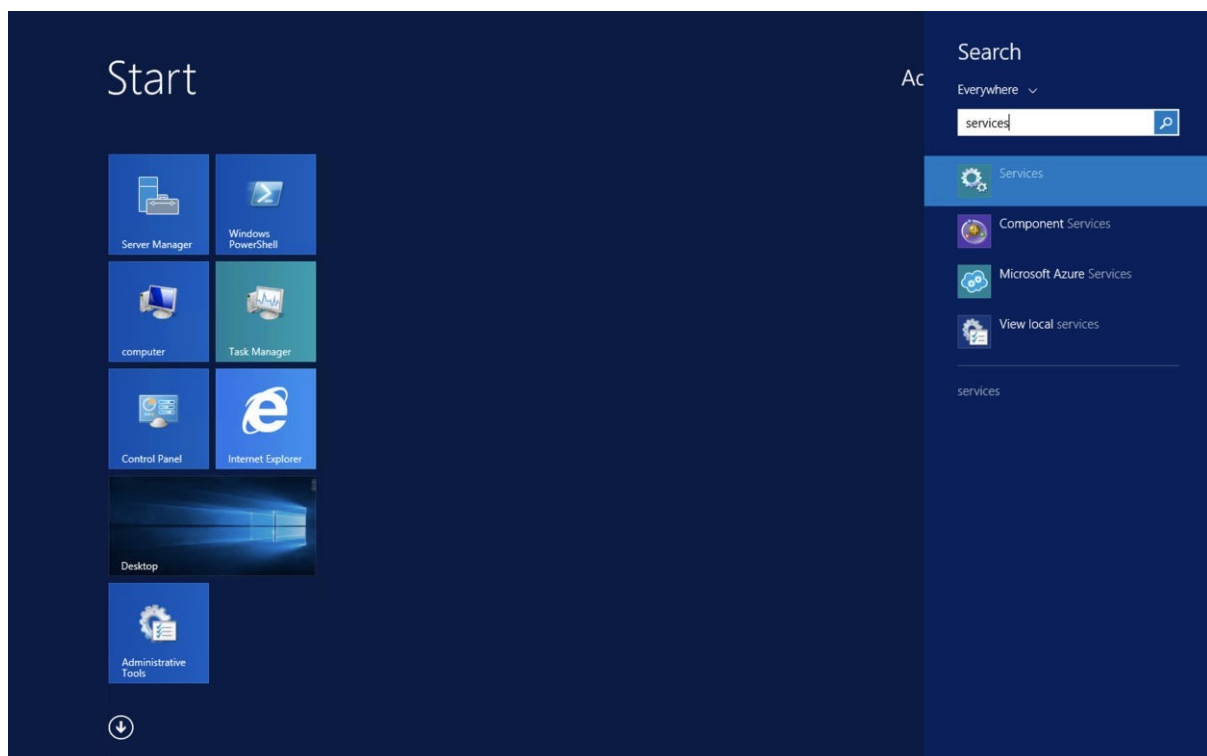
7.) Using System Components

Instructions can be found below for using each component of the server build mentioned in section 7 of this user guide document.

MySQL

The MySQL Database service has been configured to start on boot via a Windows Service. You can stop, start or check the status of the MySQL service by following the below steps.

From the Windows Start Menu > Search for Services

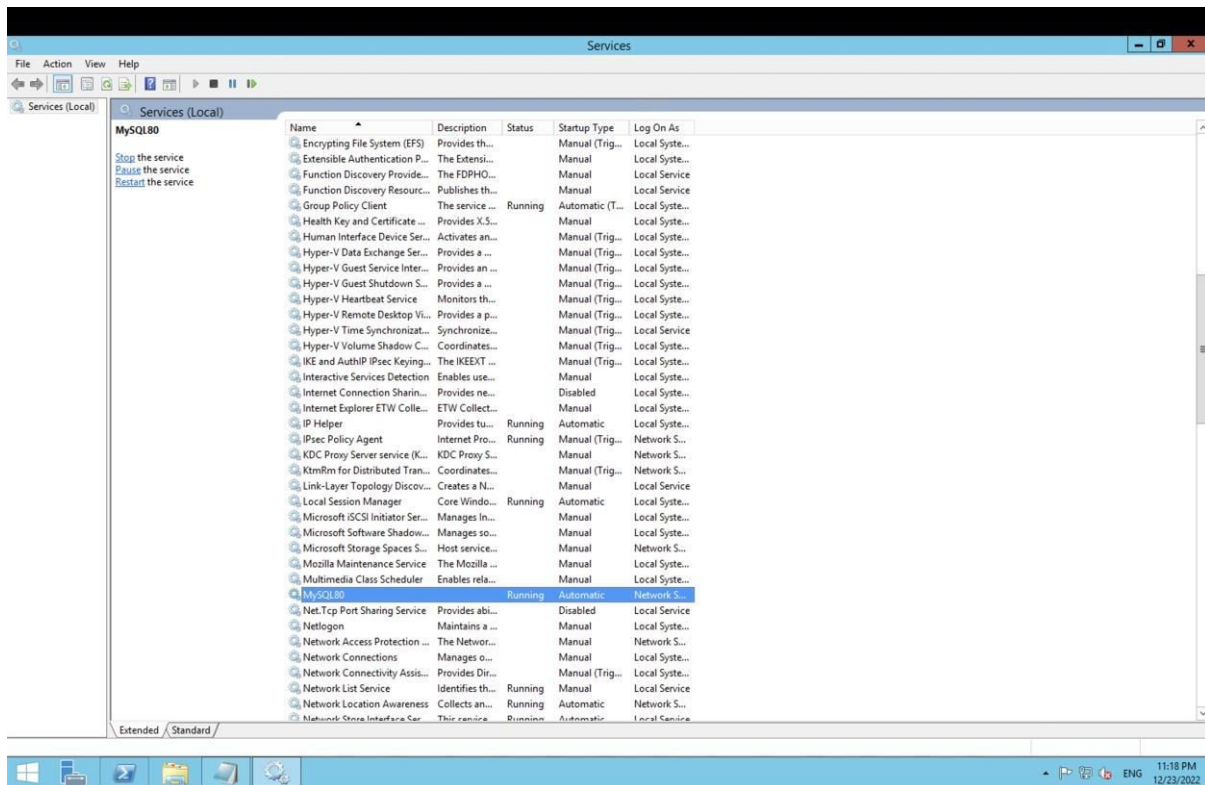


Click Services



Registered
Technology
Partner

cloudimg
(+44) 02045382725
3rd Floor 86-90 Paul Street London EC2A 4NE
support@cloudimg.co.uk
<https://cloudimg.co.uk>



Search for the Service – MySQL80 > Double Click

From the above menu you can reconfigure the service to not start on boot, stop, start and or restart the service manually.

MySQL Workbench

MySQL Workbench has been preinstalled to allow for connectivity to the database for administration. The .exe for MySQL Workbench can be found on the Desktop via the below pre-populated icon.

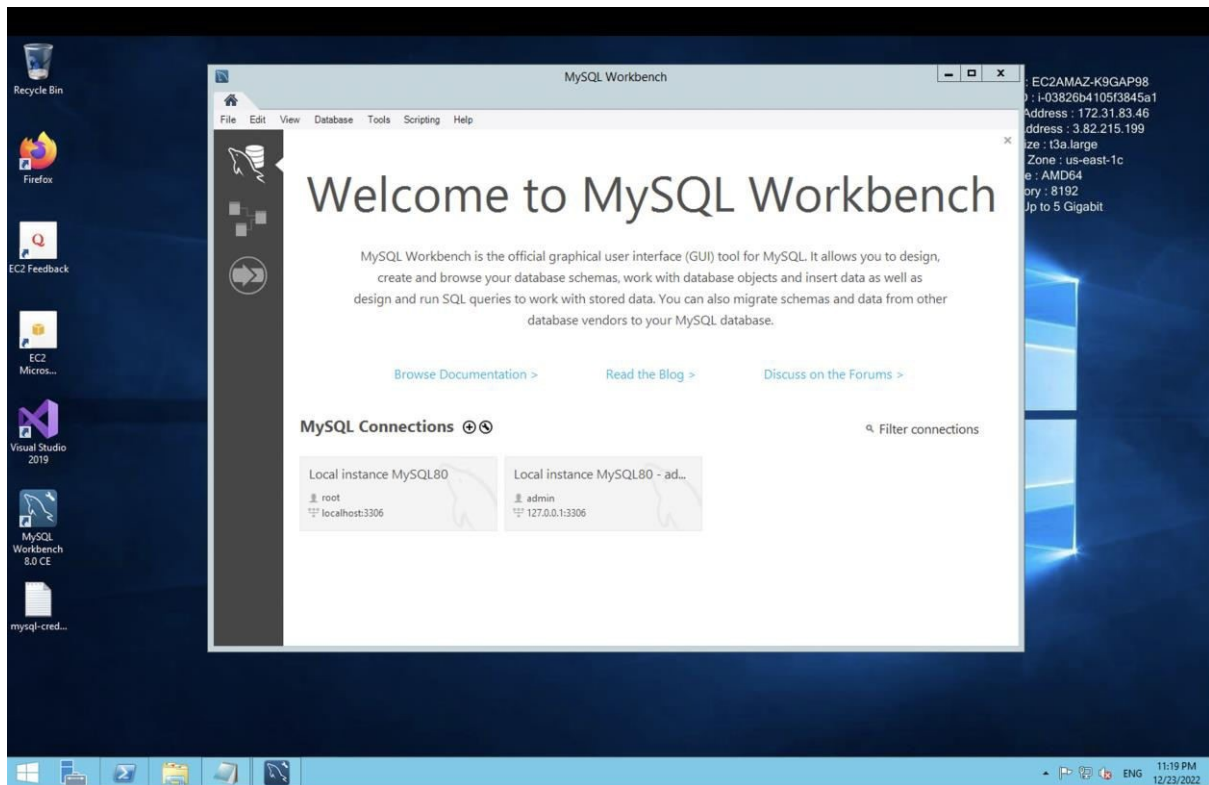


Upon double clicking the above .exe, MySQL Workbench will load and look like the below.



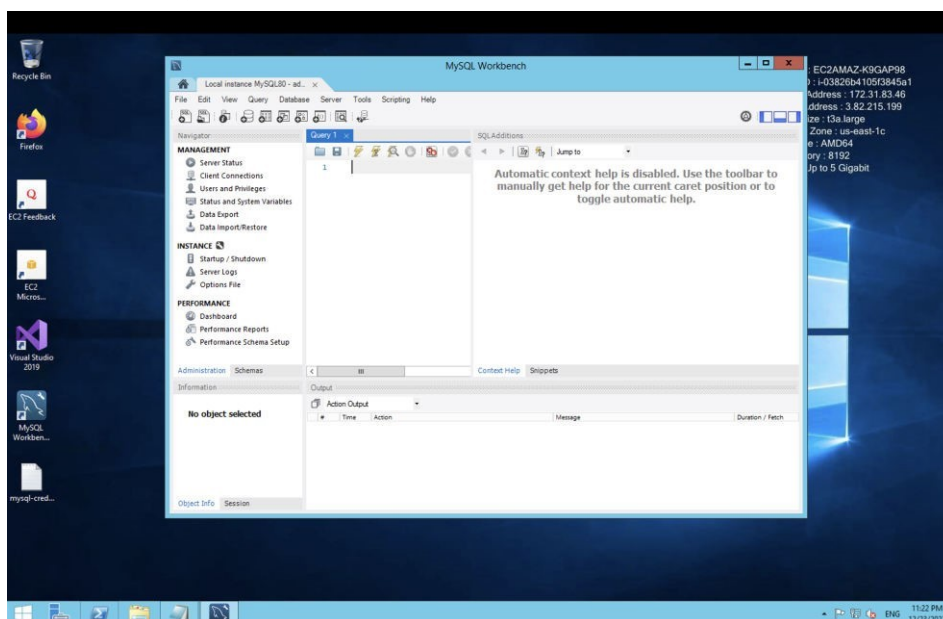
Registered
Technology
Partner

cloudimg
(+44) 02045382725
3rd Floor 86-90 Paul Street London EC2A 4NE
support@cloudimg.co.uk
<https://cloudimg.co.uk>



Two profiles have been pre-populated allowing connectivity to the MySQL Database Instance via the root user and or an admin user of which has administrator privileges. Upon selecting either profile under the MySQL Connections shown above, a password prompt will appear, the randomly generated credentials for the root / admin user can be found in the .txt file located on the Desktop (mysql-credentials.txt)

Once entered, a successful connection to the database as shown below will follow.



Registered
Technology
Partner

cloudimg
(+44) 02045382725
3rd Floor 86-90 Paul Street London EC2A 4NE
support@cloudimg.co.uk
https://cloudimg.co.uk