

# Oracle Database 21c Enterprise

Version:	1.0.0
Created by:	cloudimg

## Table of Contents

<b>1.) Overview.....</b>	<b>1</b>
<b>2.) Access &amp; Security.....</b>	<b>1</b>
<b>3.) System Requirements.....</b>	<b>2</b>
<b>4.) Connecting to the Instance.....</b>	<b>2</b>
<b>5.) Filesystem Configuration.....</b>	<b>7</b>
<b>6.) Server Components.....</b>	<b>8</b>
<b>7.) Using System Components.....</b>	<b>8</b>

## 1.) Overview

This document is provided as a user guide for the Oracle Database 21c Enterprise product offering on the AWS Marketplace. Please reach out to [support@cloudimg.co.uk](mailto:support@cloudimg.co.uk) if any issues are encountered following this user guide for the chosen product offering.

## 2.) Access & Security



Registered  
Technology  
Partner

cloudimg  
(+44) 02045382725  
3rd Floor 86-90 Paul Street London EC2A 4NE  
[support@cloudimg.co.uk](mailto:support@cloudimg.co.uk)  
<https://cloudimg.co.uk>

Please update the security group of the target instance to allow the below ports and protocols for access and connectivity.

Protocol	Type	Port	Description
RDP	TCP	3389	Remote Desktop Access
TCP	TCP	1521	Oracle Database Listener Port

### 3.) System Requirements

The minimum system requirements for the chosen product offering can be found below

Minimum CPU	Minimum RAM	Required Disk Space
1	1 GB	30GB

### 4.) Connecting to the Instance

Once launched in the Amazon EC2 Service, please connect to the instance via an RDP client using the **Administrator** user. Please allow the EC2 Instance to pass 2/2 status checks before connecting via RDP to allow the system enough time to complete the boot process.

To obtain the randomly generate password on boot for the Administrator user, please follow the below steps in the AWS Console.

Log into the Target AWS Account > Select the region of which was chosen to host the newly launched cloudimg AMI



Registered  
Technology  
Partner

cloudimg  
(+44) 02045382725  
3rd Floor 86-90 Paul Street London EC2A 4NE  
support@cloudimg.co.uk  
<https://cloudimg.co.uk>

**Console Home** Info

Reset to default layout + Add widgets

**Recently visited** Info

- EC2
- S3
- AWS Cost Explorer
- AWS Marketplace Subscriptions
- Systems Manager
- Elastic Kubernetes Service
- AWS Budgets
- VPC
- CloudShell
- AWS Application Migration Service
- Service Catalog
- CloudTrail
- IAM
- EC2 Image Builder

[View all services](#)

**Welcome to AWS**

- [Getting started with AWS](#)  
Learn the fundamentals and find valuable information to get the most out of AWS.
- [Training and certification](#)  
Learn from AWS experts and advance your skills and knowledge.
- [What's new with AWS?](#)  
Discover new AWS services, features, and Regions.

**AWS Health** Info

Open issues: 0 (Past 7 days)

Scheduled changes: 0 (Upcoming and past 7 days)

**Cost and usage** Info

Current month costs: **\$55.04**

Forecasted month end costs: **\$103.38** (Up 5% over last month)

**Top costs for current month**

- EC2 - Other: \$40.90
- Tax: \$9.17
- Amazon Simple Storage Service: \$3.20

Feedback Looking for language selection? Find it in the new Unified Settings. © 2022, Amazon Web Services, Inc. or its affiliates. Privacy Terms Cookie preferences

## Select EC2

**Resources** EC2 Global view

You are using the following Amazon EC2 resources in the US East (N. Virginia) Region:

Instances (running)	1	Dedicated Hosts	0	Elastic IPs	0
Instances	1	Key pairs	12	Load balancers	0
Placement groups	0	Security groups	2	Snapshots	863
Volumes	1				

**Launch instance**  
To get started, launch an Amazon EC2 instance, which is a virtual server in the cloud.

[Launch instance](#) [Migrate a server](#)

Note: Your instances will launch in the US East (N. Virginia) Region

**Scheduled events**

US East (N. Virginia)

**Service health**

Region: US East (N. Virginia)

Status: ✔ This service is operating normally

[AWS Health Dashboard](#)

**Zones**

Zone name	Zone ID
us-east-1a	use1-az6

**Account attributes**

Supported platforms

- VPC

Default VPC: vpc-07e0f3e58d8ba1a40

Settings

- EBS encryption
- Zones
- EC2 Serial Console
- Default credit specification
- Console experiments

**Explore AWS**

**Get Up to 40% Better Price Performance**  
T4g instances deliver the best price performance for burstable general purpose workloads in Amazon EC2. [Learn more](#)

**Save up to 90% on EC2 with Spot Instances**  
Optimize price-performance by combining EC2 purchase options in a single EC2 ASG. [Learn more](#)

[Amazon GuardDuty Malware Protection](#)

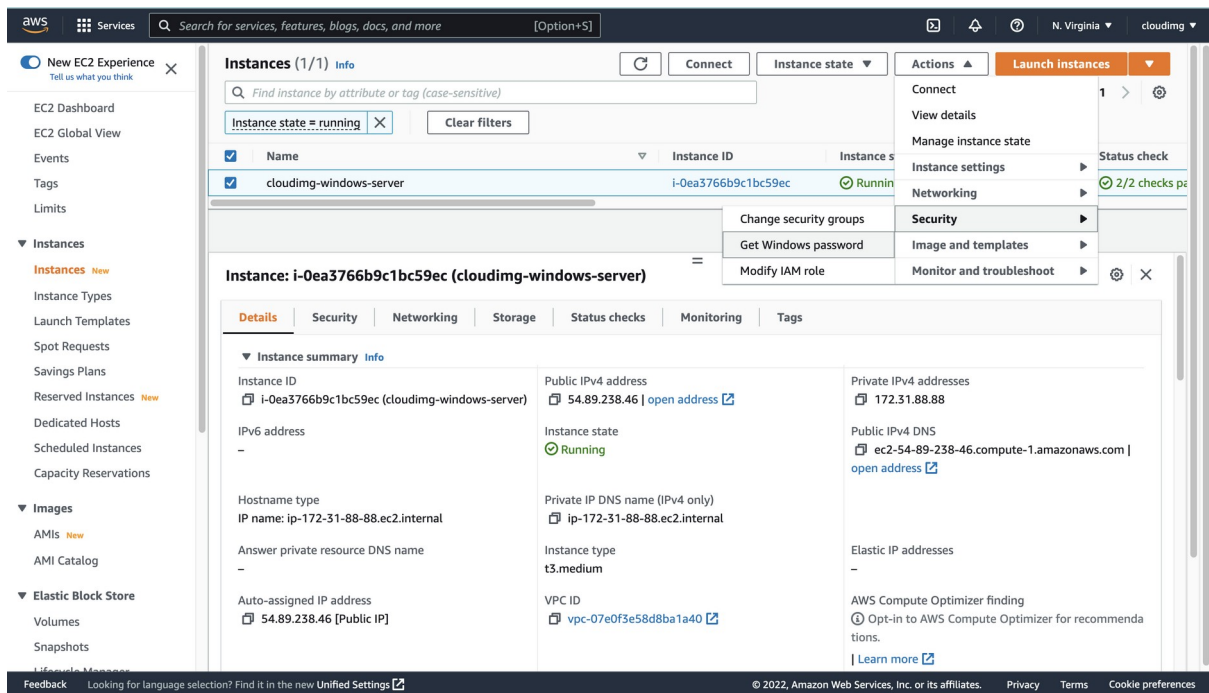
<https://console.aws.amazon.com/console/home?region=us-east-1> Unified Settings. © 2022, Amazon Web Services, Inc. or its affiliates. Privacy Terms Cookie preferences

## Select Instances (running)

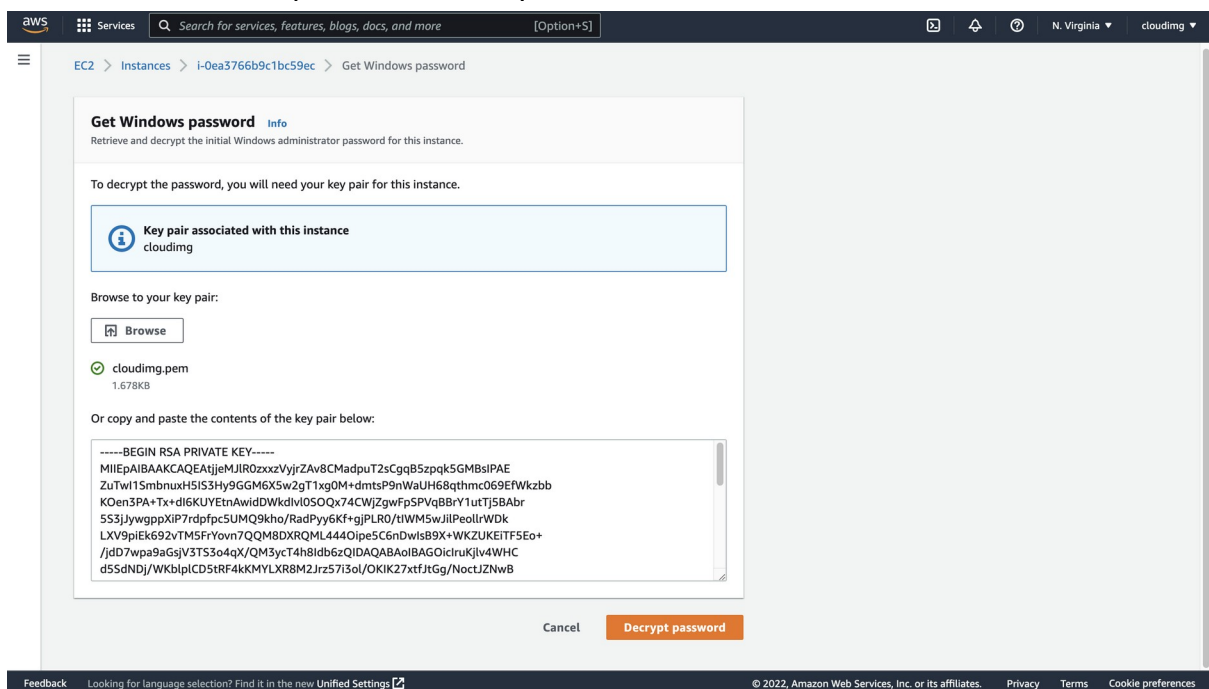


Registered  
Technology  
Partner

cloudimg  
(+44) 02045382725  
3rd Floor 86-90 Paul Street London EC2A 4NE  
support@cloudimg.co.uk  
<https://cloudimg.co.uk>



Search for the newly launched EC2 Instance  
 Select the Radio button above for the instance  
 Click Actions > Security > Get Windows password

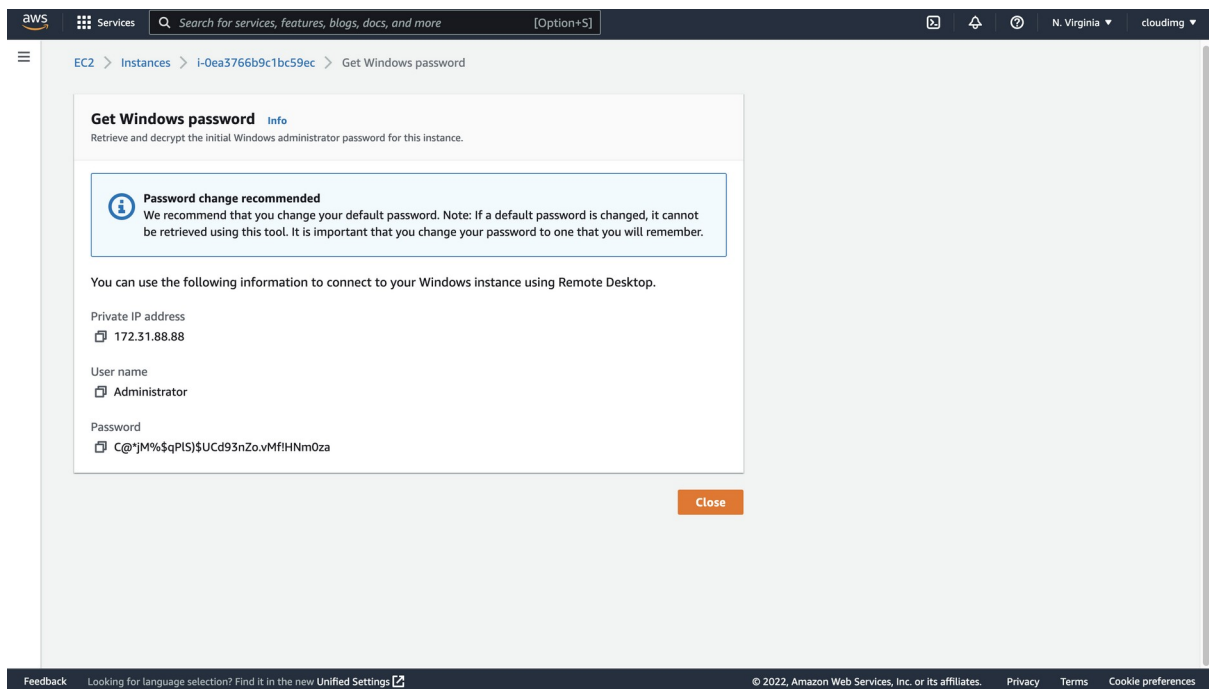


Click Browse and upload the key pair selected during the launch of the EC2 instance from the AWS Marketplace.  
 Click Decrypt password

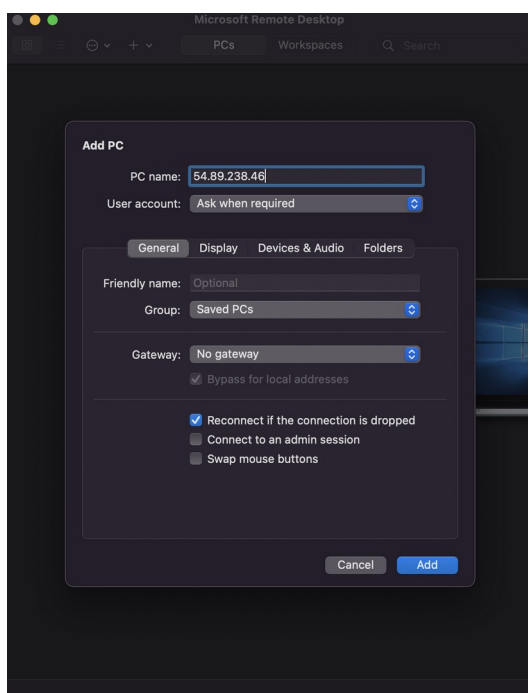


Registered  
 Technology  
 Partner

cloudimg  
 (+44) 02045382725  
 3rd Floor 86-90 Paul Street London EC2A 4NE  
 support@cloudimg.co.uk  
 https://cloudimg.co.uk



The Administrator password will now appear in plain text like the above example. Take a copy of this value and open a Remote Desktop Client Application.



Create a new connection and enter the IP address of the newly launched EC2 Instance. For this example, the public IP address will be used as the server has been launched in a public subnet. Use the private IP address where applicable for your environment if you have a private connection into the AWS VPC of which hosts the EC2 Instance. These Private connections often take the form of a VPN connection.

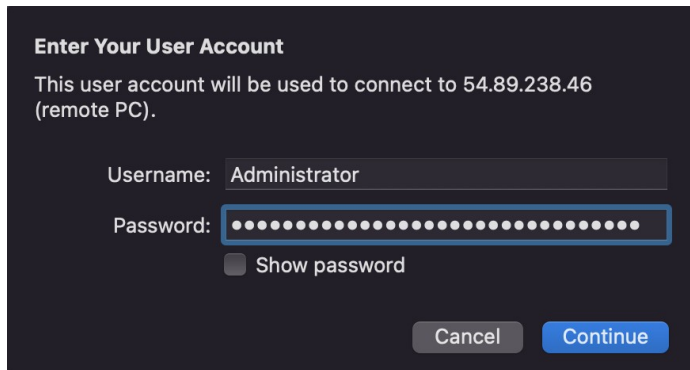


Registered  
Technology  
Partner

cloudimg  
(+44) 02045382725  
3rd Floor 86-90 Paul Street London EC2A 4NE  
support@cloudimg.co.uk  
<https://cloudimg.co.uk>

Click Add

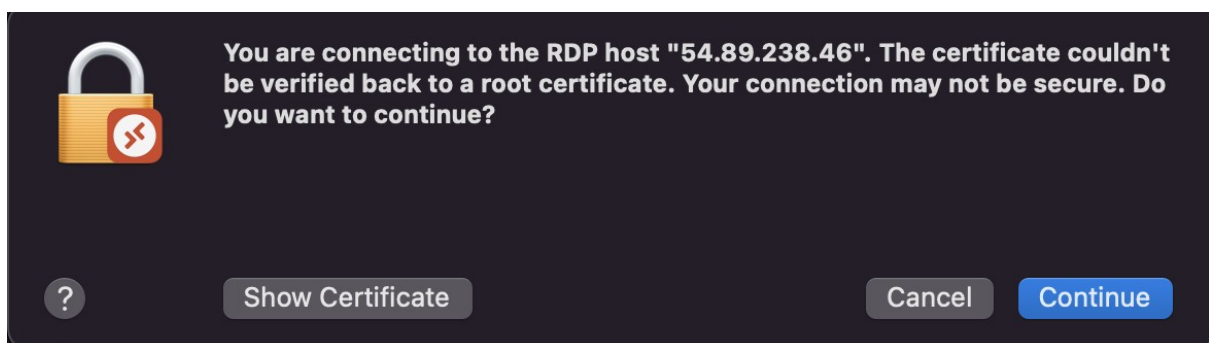
Once added, double click the connection profile created in the above step, you will be prompted for a username & password. Enter the below values.



**Username: Administrator**

**Password: DECRYPTED VALUE RETRIEVED FROM THE ABOVE STEPS**

Click Continue

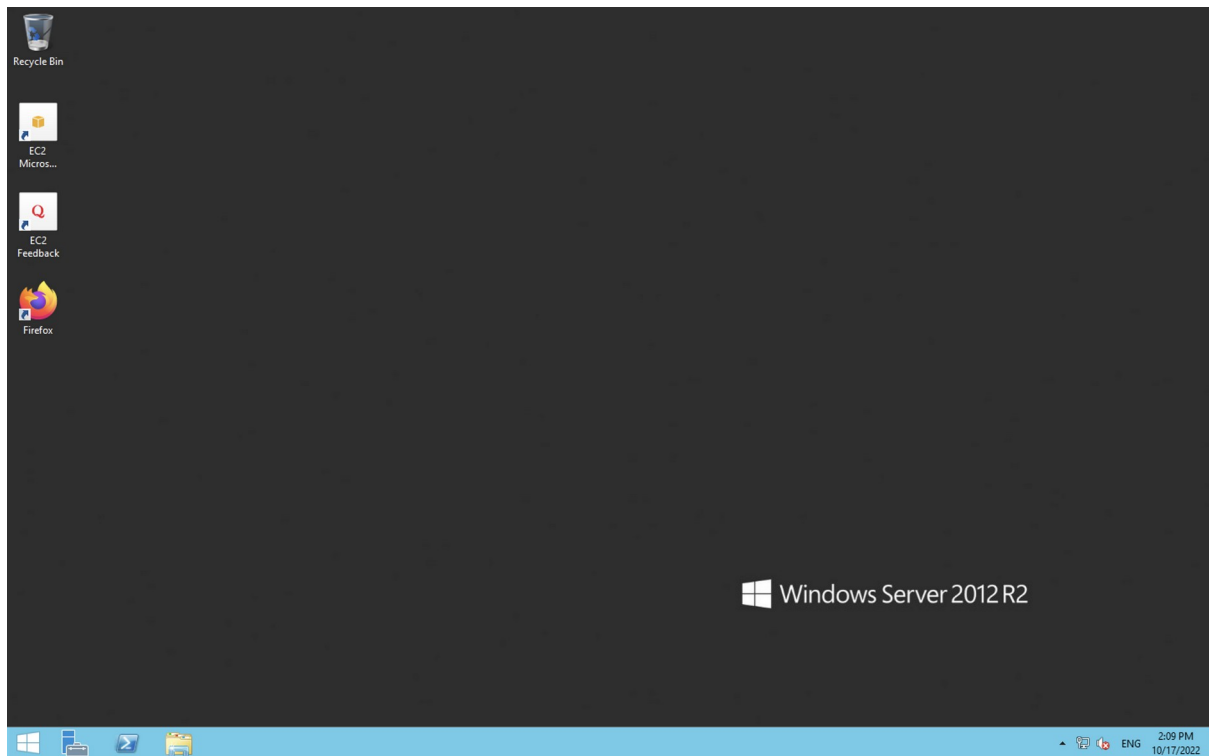


Click Continue if a pop up like the above appears.



Registered  
**Technology  
Partner**

cloudimg  
(+44) 02045382725  
3rd Floor 86-90 Paul Street London EC2A 4NE  
support@cloudimg.co.uk  
<https://cloudimg.co.uk>



You have now successfully connected to the Windows Server hosted in AWS.

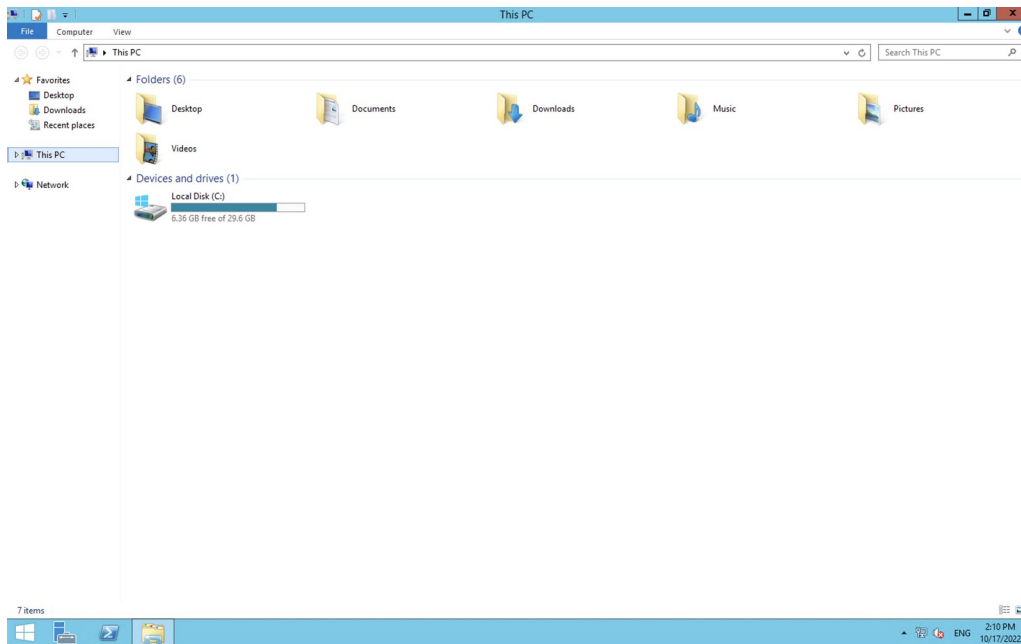
## 5.) Filesystem Configuration

Please see below for a screenshot of the server disk configuration and specific mount point mappings for software locations.



Registered  
Technology  
Partner

cloudimg  
(+44) 02045382725  
3rd Floor 86-90 Paul Street London EC2A 4NE  
support@cloudimg.co.uk  
<https://cloudimg.co.uk>



## 6.) Server Components

Please see below for a list of installed server components.

Component	Version
Oracle Database 21c Enterprise	21.3.0.0

## 7.) Using System Components

Instructions can be found below for using each component of the server build mentioned in section 7 of this user guide document.

### Oracle Database

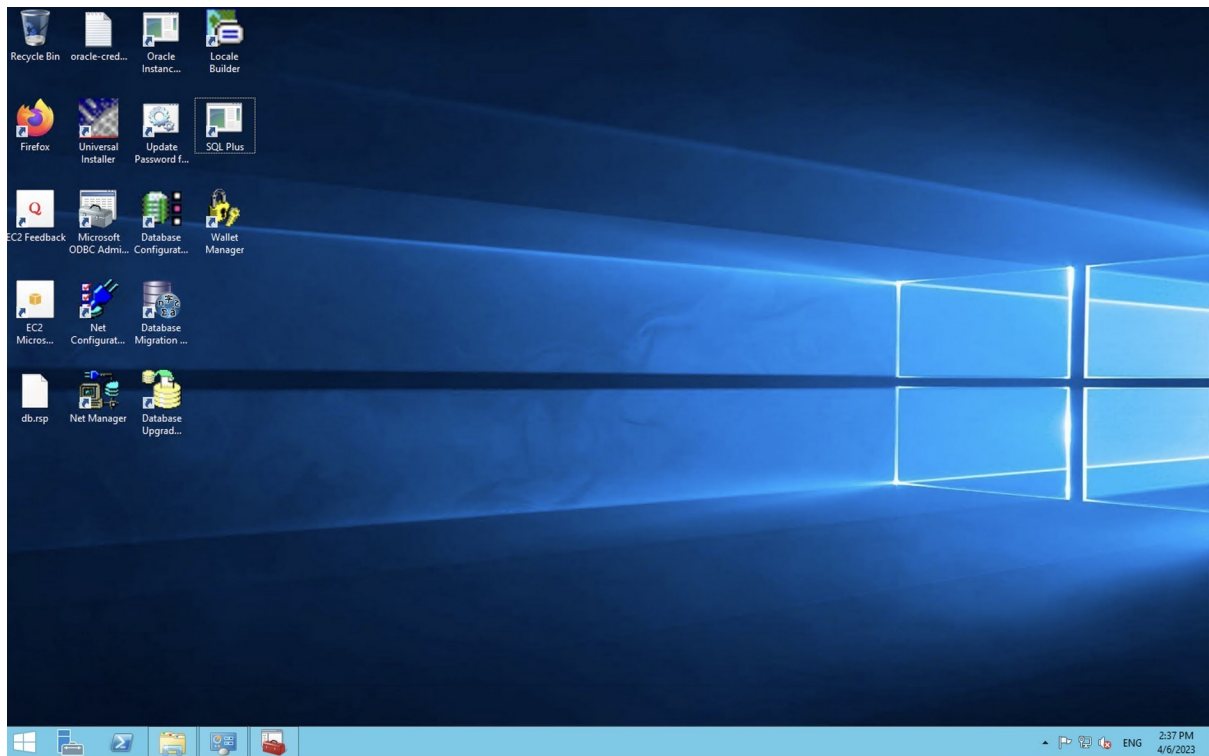
The Oracle Database service and example Database instance (ORCL) have been configured to start on boot. Available on the Desktop of the Administrator user are the Oracle utilities most used to Administer an Oracle Database running on Windows.



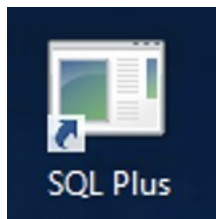
Registered  
Technology  
Partner

cloudimg  
(+44) 02045382725  
3rd Floor 86-90 Paul Street London EC2A 4NE  
support@cloudimg.co.uk  
<https://cloudimg.co.uk>





The most common of these utilities being sqlplus can be found via the below icon. Upon double clicking this executable, a shell will appear prompting for a username of which to log into the Oracle Database with. Please reference the oracle-credentials file also located on the Desktop for the randomly generated credentials to be used for authentication to the database as the system user.



Registered  
Technology  
Partner

cloudimg  
(+44) 02045382725  
3rd Floor 86-90 Paul Street London EC2A 4NE  
support@cloudimg.co.uk  
<https://cloudimg.co.uk>



Registered

Technology  
Partner

cloudimg  
(+44) 02045382725  
3rd Floor 86-90 Paul Street London EC2A 4NE  
support@cloudimg.co.uk  
<https://cloudimg.co.uk>